



Optimized System Flow (OSF) Kit - For Elite XL 400 - 2000kBTU Boiler Models

Job Name:	Location:
Engineer:	Wholesaler:
Mechanical Contractor:	Notes:
Model Number:	

Features and Benefits of the Optimized System Flow (OSF) Kit

- Only a Variable Speed System Pump is needed for operation
- Lowers Installation Costs - Due to the elimination of individual boiler pumps and associated fittings, vibration isolation, starters, power wiring, controls, etc.
- Reduced Pressure Drop
- Reduced Pump Horsepower
- Higher System Pump Efficiency - able to reduce variable pump speed to meet a single boiler's minimum flow
- No reverse flow, guaranteeing the lowest possible return temperature
- Lower individual boiler setpoint temperatures due to the elimination of blending further reduces operating costs

Features and Benefits

- Bubble Tight Shut-Off with zero leakage eliminates wasted energy
- Fail safe operation with manual override
- Long stem design allows for 2" insulation
- Completely assembled and tested, ready for installation
- Available in 2" and 2 1/2" sizes, ANSI Class 125/150 flanges
- Standard 120VAC Actuator with Spring Return
- Two-year conditional warranty against failure due to defect in materials

Application

The Optimized System Flow (OSF) Kit is designed for use in ANSI flanged piping systems to meet the needs of bi-directional high flow HVAC hydronic applications with 0% leakage. Valve face-to-face dimensions comply with API 609 and MSS-SP-67. Completely assembled and tested, ready for installation.



Included with Kits*

7550P-985 - ELX-400 - 1000 Boiler Models - Includes eight (8) Bolts and Washers and two (2) 2" NPT x Flange Adapters and one (1) Valve
7550P-986 - ELX-1500 - 2000 Boiler Models -Includes eight (8) Bolts and Washers and one (1) Valve

*NOTE: 400 - 1000 require NPT x Flange Adapters, which are included; 1500 - 2000 Models have Flanged Connections standard with boiler

Jobsite Note

Valves should be stored in a weather protected area prior to construction. Reference the butterfly valve installation instructions for additional information. Complete installation recommendations can be found in Belimo's Installation and Maintenance Instructions for F650HD+AFRX-UP / F665HD+AFRXUP Butterfly Valves.

NOTE: The manufacturer reserves the right to make product changes or updates without notice and will not be held liable for typographical errors in literature.

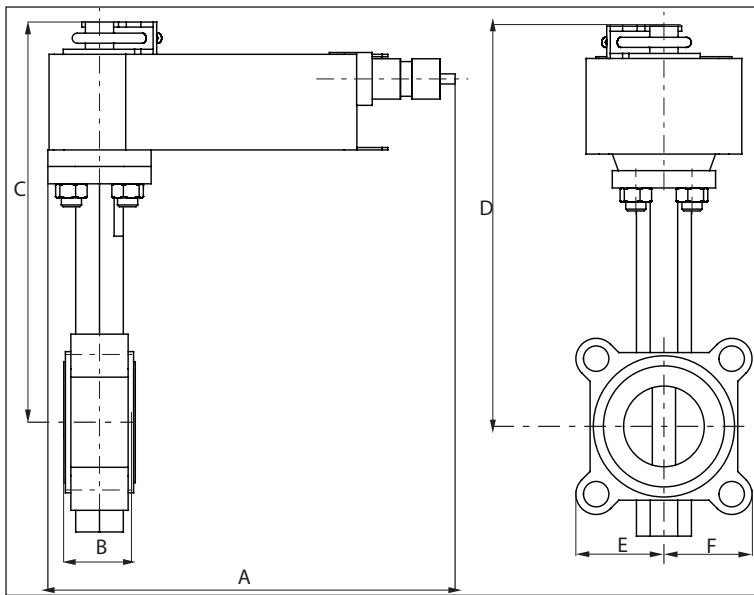


Figure 1 - Dimensional Drawing Part # 7550P-985

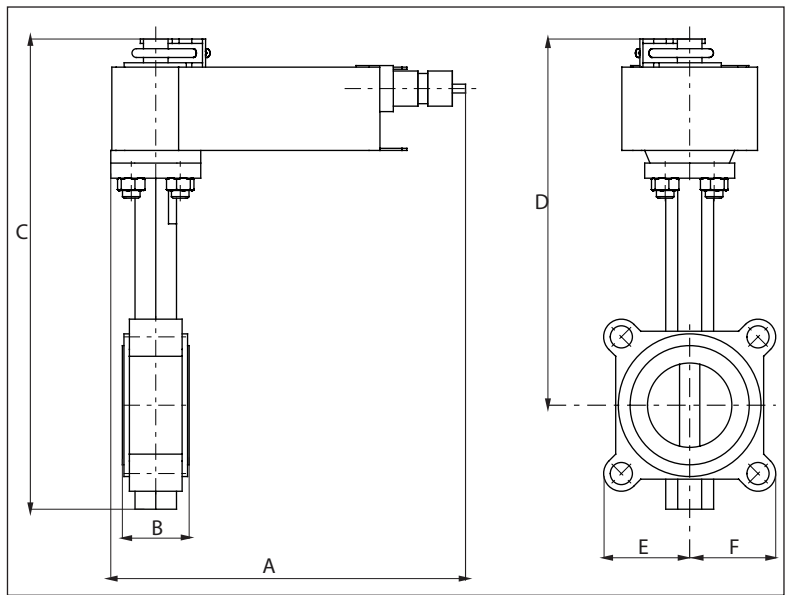


Figure 2 - Dimensional Drawing Part # 7550P-986

Part Number	A	B	C	D	E	F	Valve Size
7550P-985	10.5"	1.7"	12.0"	9.2"		2.9"	2"
7550P-986	10.5"	1.9"	12.8"	9.8"		3.3"	2 1/2"

Table 1 - Dimensions

Technical Data	7550P-985	7550P-986
Fluid	Hot Water, Up to 60% Glycol	
Flow Characteristic	Modified Equal Percentage	
Controllable Flow Range	90° Rotation	
Valve Size (mm)	2"	2 1/2"
Pipe Connection	for use with ANSI class 125/150 flanges	
Housing	Ductile Cast Iron ASTM A536	
Body Finish	Epoxy Power Coating (Blue RAL 5002)	
Stem	416 Stainless Steel	
Stem Seal	EPDM (Lubricated)	
Seat	EPDM	
Bearing	RPTFE	
Disc	304 Stainless Steel	
Body Pressure Rating	ANSI Class Consistent with 125, 232 psi CWP	
ANSI Class	Consistent with 125	
Number of Bolt Holes	4	
Lug Threads	5/8-11 UNC	
Close-Off Pressure Δps	200 psi	
Rangeability Sv	10:1 (for 30° to 70° range)	
Maximum Velocity	12 FPS	
Cv	115	196
Weight	5.3 lb	6.2 lb
Fluid Temp Range (water)	-22 - 250°F	
Leakage Rate	0%	
Servicing	Maintenance-Free	

Table 2 - Technical Data

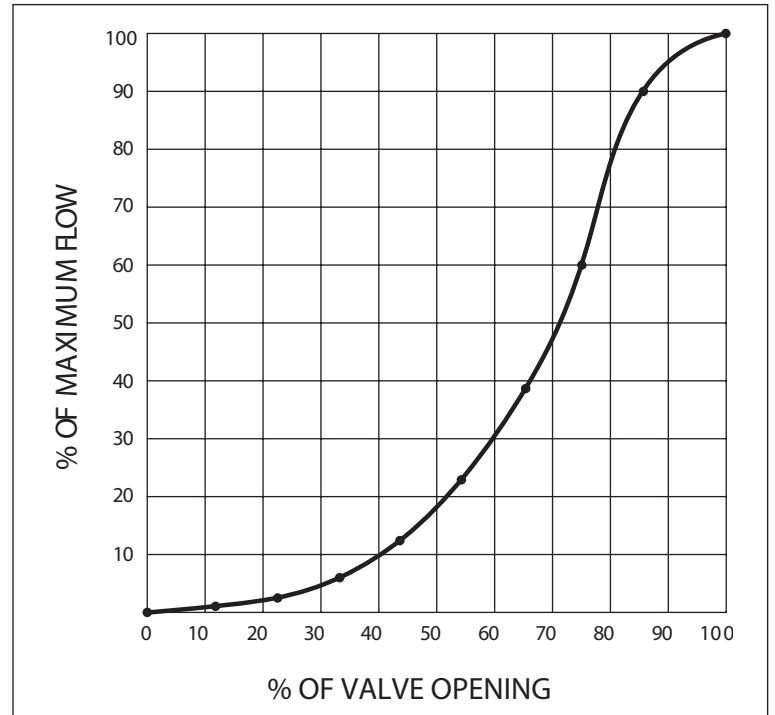


Table 3 - Flow / Mounting Details